



## The Park W5

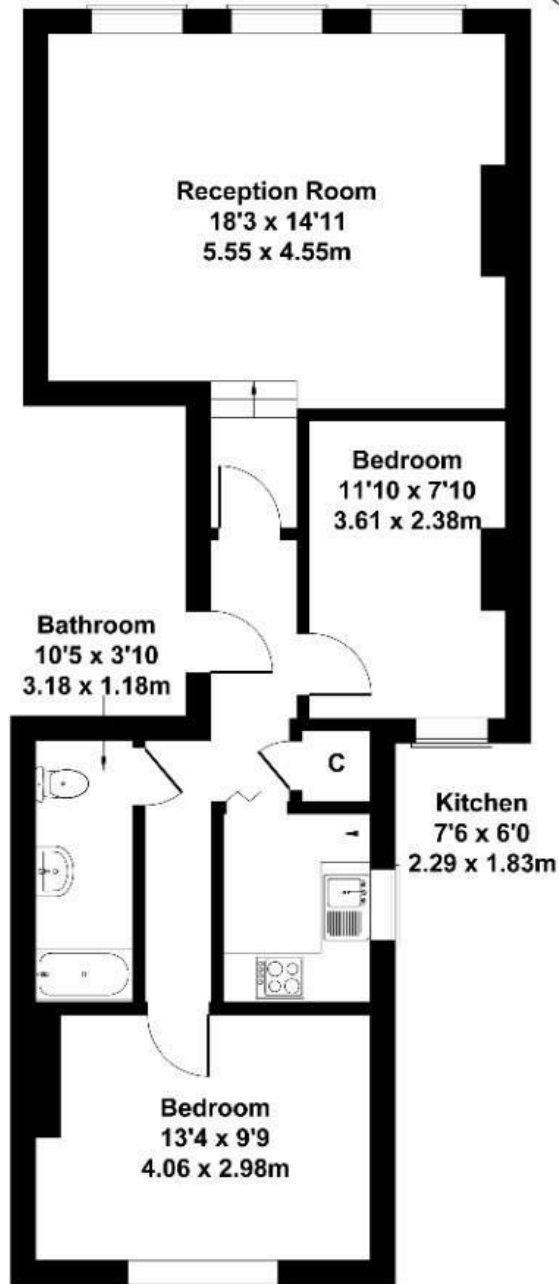
Long Let. Nestled in a central location, this delightful first-floor flat offers a perfect blend of comfort and convenience. Boasting two spacious double bedrooms, this property is ideal for professionals, couples, or small families seeking a serene living environment.

- Available now
- Sought after location
- Walking distance to Ealing Broadway
- Permit Parking available
- Two double bedrooms
- early viewings advised

£2,400 PCM

# The Park

Approximate Gross Internal Area  
689 sq ft - 64 sq m



## FIRST FLOOR

Not to Scale. Produced by The Plan Portal 2026  
For Illustrative Purposes Only.

Energy Efficiency Rating		
	Current	Potential
<i>Very energy efficient - lower running costs</i>		
(92 plus) <b>A</b>		
(81-91) <b>B</b>		
(69-80) <b>C</b>		
(55-68) <b>D</b>		
(39-54) <b>E</b>		
(21-38) <b>F</b>		
(1-20) <b>G</b>		
<i>Not energy efficient - higher running costs</i>		
<b>England &amp; Wales</b>	EU Directive 2002/91/EC	